



**MAG ELECTRIC Co.**

Instrument current & voltage transformers  
3.6kV up to 36 kV

**Instrument voltage transformers, indoor, Cast-Resin Insulated**



**Technical data**

Type		VMT12-1 VMS12-1	VMT24-1 VMS24-1	VMS24-2
Highest voltage for equipment	kV	12	24	24
Power frequency withstand test voltage, 1 minute	kV	28	50	50
Lightning impulse test voltage (1.2/50 $\mu$ s full wave)	kV	75	125	125
Rated frequency	Hz	50/60	50/60	50/60
Max. rated primary voltage	kV	12/ $\sqrt{3}$	24/ $\sqrt{3}$	24
Secondary thermal limit current for measuring winding	A	7	7	4
Rated voltage factor /8h		1.9	1.9	-
Secondary thermal limit current for Earth – fault winding	A	4	4	-
Secondary Voltage	V	100/ $\sqrt{3}$ ; 110/ $\sqrt{3}$ ; 220/ $\sqrt{3}$	100;110;220	
Max number of cores		2/3	2/3	2
Accuracy class measuring / protection		0.2-0.5-1 /3P -6P		
Rated output		15-100 VA		

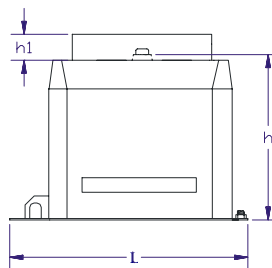
**On Request:**

Secondary change over provides dual primary rated voltage for instance (20000-11000/100V).

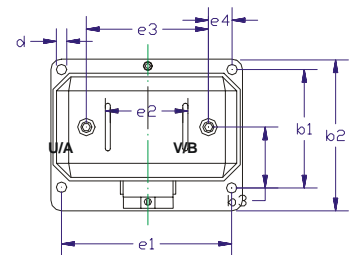
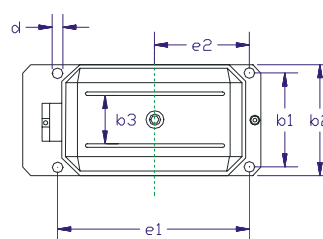
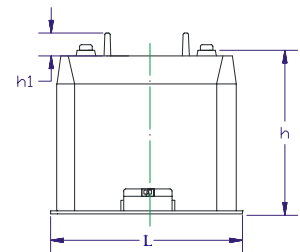
\* **Ribs on the top for increasing creepage distance. (20kV)**

Type	VMT12-1			
	VMS24-2	VMT24-1	VMS12-1	VMS24-1
e1	256	210	270	280
e2	120	105	135	140
e3	210	-	-	-
e4	23	-	-	-
L	290	292	342	362
b1	185	148	125	148
b2	255	178	148	178
b3	93	80	-	80
h	280	250	220	250
h1*	35	35	35	35
d	14	14	14	14

**VMT12/24-1  
VMS12/24-1**



**VMS24-2**



**Dimensions in mm**