



**MAG ELECTRIC Co.**

Instrument current & voltage transformers  
3.6kV up to 36 kV

**Instrument voltage transformers, indoor, Cast-Resin Insulated**



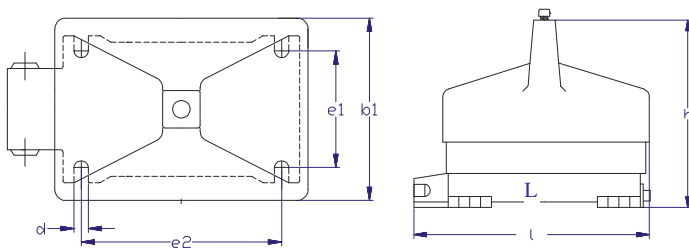
**Technical data**

Type		VM12-1	VM24-1	VM36-1	VM12-2	VM24-2
Highest voltage for equipment	kV	12	24	36	12	24
Power frequency withstand test voltage, 1 minute	kV	28	50	70	28	50
Lightning impulse test voltage (1.2/50 $\mu$ s full wave)	kV	75	125	170	75	125
Rated frequency	Hz	50/60	50/60	50/60	50/60	50/60
Max. rated primary voltage	kV	12/ $\sqrt{3}$	24/ $\sqrt{3}$	36/ $\sqrt{3}$	12	24
Secondary thermal limit current for measuring winding	A	10	12	14	6	7
Rated voltage factor /8h		1.9	1.9	1.9	-	-
Secondary thermal limit current for Earth – fault winding	A	6	6	6	-	-
Secondary Voltage	V	100/ $\sqrt{3}$ ; 110/ $\sqrt{3}$ ; 220/ $\sqrt{3}$			100;110;220	
Max number of cores		3	3	3	2	2
Accuracy class measuring / protection		0.2-0.5-1 /3P -6P				
Rated output		15-200 VA				

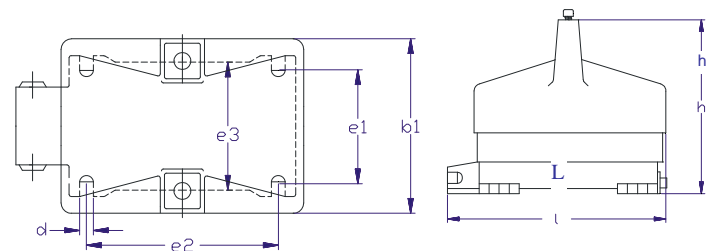
**On Request:**

Secondary change over provides dual primary rated voltage for instance (20000-11000/100V).

**VM 12-1 / VM36-1**



**VM12-2/VM24-2**



Type	VM12-1	VM24-1	VM36-1
e1	175	200	200
e2	225	250	250
L	324	366	366
b1	200	270	270
h	240	300	390
d	12	14	14

Type	VM12-2	VM24-2
e1	175	200
e2	225	250
e3	150	210
L	324	366
b1	200	270
h	240	300
d	12	14

**Dimensions in mm**